
Aluminum Anode

■ General

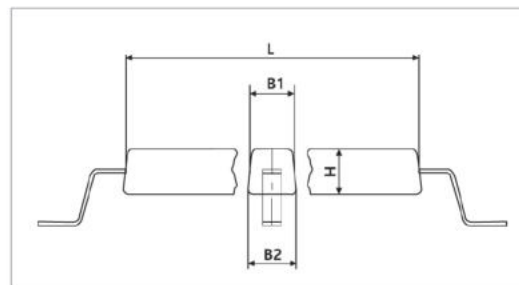
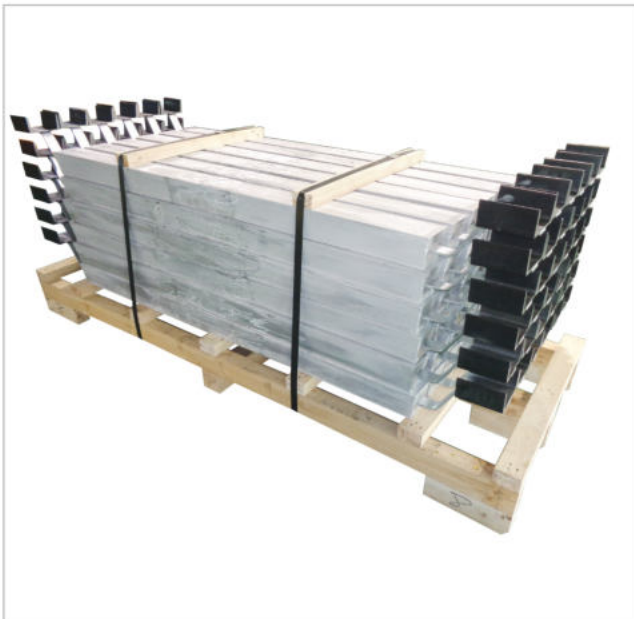
Al anode makes an attractive sacrificial anode material, especially in low resistivity applications such as seawater and produced brines. Al anode has lower driving potential than Mg anode and higher current capacity than Zn anode, and these are important traits for its use in long life saline system.

■ Product Properties

Open Circuit Potential Cu/CuSO ₄ [-mV]	Theoretical Current Capacity [A • hr/Kg]	Effective Current Capacity [A • hr/Kg]	Current Efficiency [%]	ConsumptionRate [Kg/A•yr]	Specific Gravity
1,100	2,890	2,600	90	3.37	2.7

■ Al Anode (Off-shore Type) Dimension and Weight

Type	Dimension [mm] (B1 + B2) X H X L	Weight [Kg]		Output current [A] $\rho=30[\text{ohm.cm}]$	Design life [Year]	Remarks
		Net	Gross			
A1	(170+150)x145x335	20.7	23.2	1.0	10	
A2	(170+135)x130x585	30.8	33.9	1.5	10	
A3	(160+125)x125x875	41.4	45.1	2.0	10	
A4	(155+115)x120x1,195	50.8	57.5	2.5	10	
A5	(155+120)x110x1,555	61.6	69.6	3.0	10	
B1	(235+200)x230x300	40.2	44.2	1.0	20	
B2	(225+190)x205x510	58.0	62.7	1.5	20	
B3	(220+180)x190x765	77.6	83.2	2.0	20	
B4	(200+170)x190x1,035	97.0	103.6	2.5	20	
B5	(195+165)x180x1,340	115.6	123.3	3.0	20	

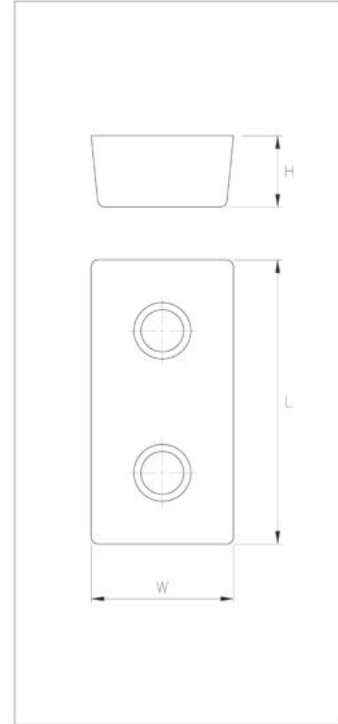


■ Al Anode (Stand-off Type) Dimension and Weight

Type	Dimension [mm]	Weight [Kg]		Remarks
	(B1+B2)xHxL	Net	Gross	
DPA-J10-1	(145+120)x140x380	18.6	22.1	
DPA-J10-2	(140+110)x130x620	26.7	30.6	
DPA-J10-3	(150+125)x140x690	35.3	39.3	
DPA-J10-4	(130+105)x115x1,230	44.0	48.8	
DPA-J10-5	(125+100)x110x1,610	52.8	58.2	
DPA-J10-6	(125+100)x110x1,950	63.9	69.8	
DPA-J15-1	(180+155) x175x330	25.8	29.4	
DPA-J15-2	(170+145)x160x600	40.3	44.3	
DPA-J15-3U	(160+140)x150x850	51.0	55.4	
DPA-J15-4	(160+135)x140x1,150	63.3	68.1	
DPA-J15-5	(150+125)x140x1,480	76.0	81.4	
DPA-J20-1	(215+190)x210x400	45.5	49.3	
DPA-J20-2	(205+170)x190x550	52.4	56.4	
DPA-J20-3U	(270+210)x235x450	68.1	71.9	
DPA-J20-4	(225+195)x230x660	85.5	89.7	
DPA-J20-5	(180+150)x165x1,390	101.3	106.6	
DPA-J20-6	(175+140)x170x1,690	121.1	126.9	
DPA-J30-1T	(295+265)x280x490	103.1	108.7	
DPA-J30-2U	(295+265)x280x610	128.4	134.3	
DPA-J30-3	(295+265)x280x730	153.7	159.8	
DPA-J30-4	(225+195)x230x1,370	177.4	185.0	
DPA-YX-1	(210+200)x220x1,600	181.0	190.0	
DPA-YX-2	(240+220)x230x2,300	294.0	310.0	

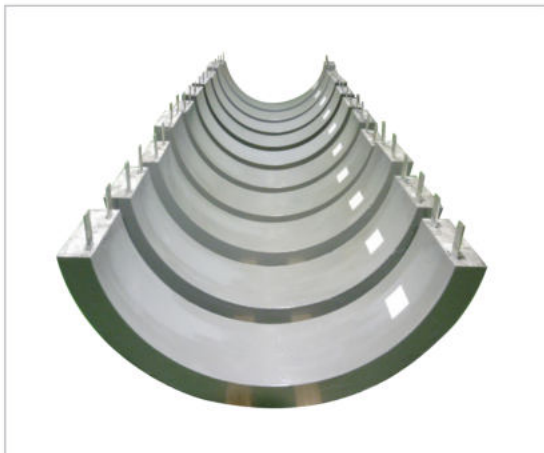
■ Al Anode (Plate Type) Dimension and Weight

Type	Dimension [mm]	Weight [Kg]	Remarks
	L x W x H		
DPA-B150-1	150 x 150 x 30	1.7	
DPA-B150-2	150 x 150 x 50	2.9	
DPA-B200-1	200 x 100 x 20	1.0	
DPA-B200-2	200 x 100 x 30	1.5	
DPA-B200-3	200 x 100 x 40	1.9	
DPA-B200-4	200 x 100 x 100	4.8	
DPA-B300-1	300 x 150 x 20	2.7	
DPA-B300-2	300 x 150 x 25	3.2	
DPA-B300-3	300 x 150 x 30	3.6	
DPA-B300-4	300 x 150 x 40	4.4	
DPA-B300-5	300 x 150 x 50	5.6	
DPA-B300-6	300 x 150 x 60	6.4	



■ Al Anode (Bracelet Type) Dimension and Weight

- Anodes can be manufactured in various sizes according to the offshore pipe diameter.



■ Chemical Composition

Element	DYCE	Alloy III	DNV
Zn	1.0~5.0	2.8~3.5	2.5~5.75
Sn	0.01~0.15	-	-
In	0.005~0.03	0.01~0.02	0.015~0.040
Mg	1.0~3.0	-	-
Fe	1.0 Max	0.12 Max	0.09 Max
Si	-	0.08~0.20	0.12 Max
Cu	-	0.01 Max	0.003 Max
Cd	-	-	0.002 Max
Al	Balance	Balance	Balance

* The chemical composition according to the international specification standard can be adjusted.

■ Application

- Platform, Dock, Barge, Steel pile, Pier, Tank and Vessel internal, Condenser, Heat Exchanger, Ship Ballast Tank, Offshore Pipeline, etc.
